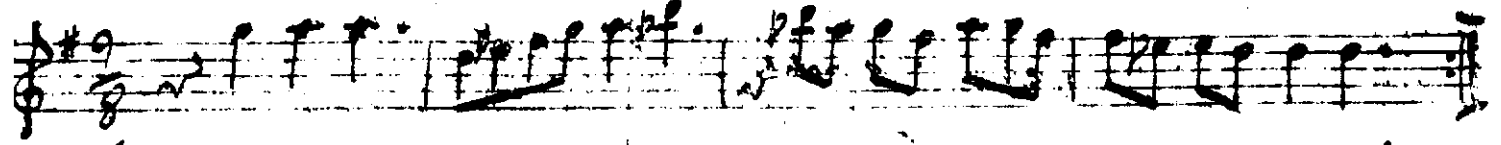


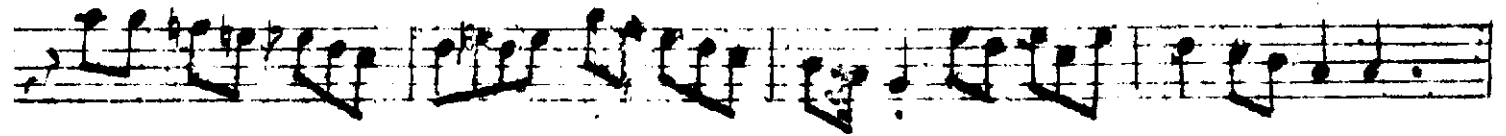
Beyatî ^{araban} Sârke

Satârî ef

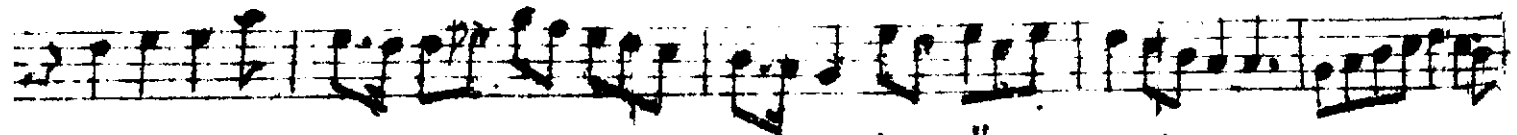
Ey BA ği E deb GEL BEZ ME BU SEB



OL ZEV HE SE BEB GEL BEZ ME BU SEB



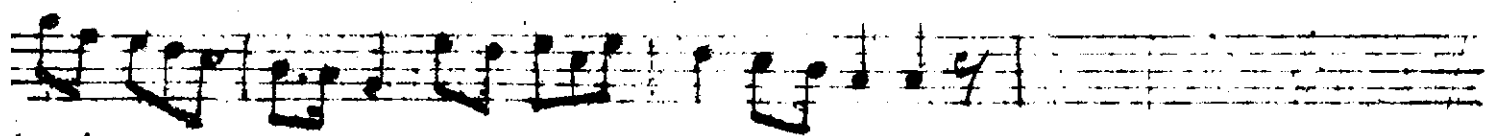
OL ZEV HE SE BEB GEL BEZ ME BU A MAN



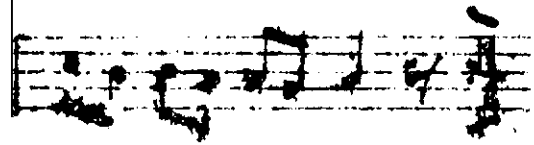
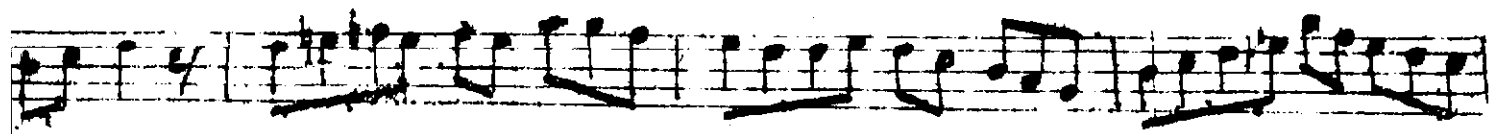
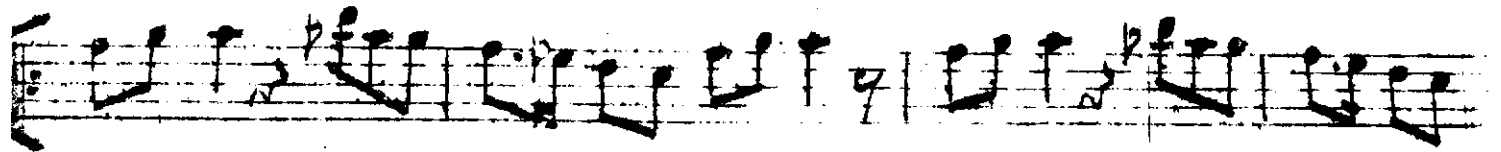
CA NIM A MAN A CÜ LÜM OL ZEV HA 2



BEB GEL BEZ ME BU SEB



Keda



Ey Bâği edep } gel beyme bu seb
ol zevke sebeb } gel beyme bu seb